

CONSTRUCTION MANAGEMENT

Notes by-

Pravin S Kolhe,

BE(Civil), Gold Medal, MTech (IIT-K)

**Assistant Executive Engineer,
Water Resources Department,**

www.pravinkolhe.com

Site layout

Defⁿ :- It is the drawing showing an arrangement of "resources" (Men, Materials, Machineries) so that work is efficient & economical with min "lead, lift & cycle time."
It changes with stages of constⁿ.

* Purpose / functions of site / job layout :-

- ① Reduce lead & lift.
- ② Reduce completion time of project.
- ③ To work efficiently & economically.
- ④ To reduce wastage of matl.
- ⑤ To increase o/p
- ⑥ For safety.
- ⑦ Optimum use of resources.

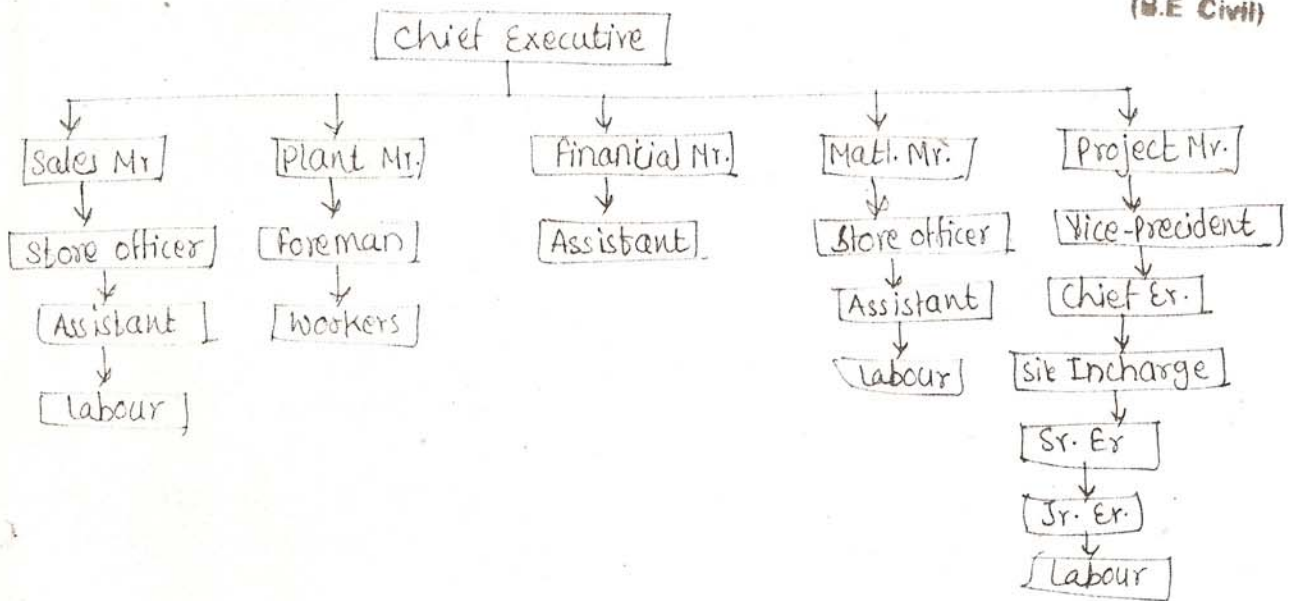
* Factors affecting site layout :-

- ① Access to site:
- ② Internal Road.
- ③ Type of construction
- ④ Duration of construction.
- ⑤ Topography.
- ⑥ Availability of Resources.
- ⑦ Process of constⁿ.
- ⑧ Importance of work.

~~Comparison of dipper shovel, back hoe, drag line, etc | clamshell.~~

① Line organisation

Er. Pravin Kolhe
(B.E Civil)



② Functional Organisation

CONSTRUCTION MANAGEMENT

